

Unity Building, 3 Rumford Place, Liverpool, Merseyside L3 9BZ

Offers Over £140,000

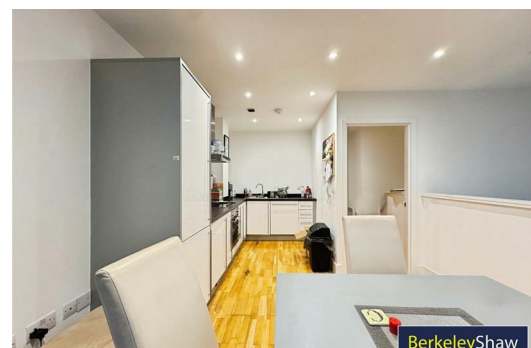
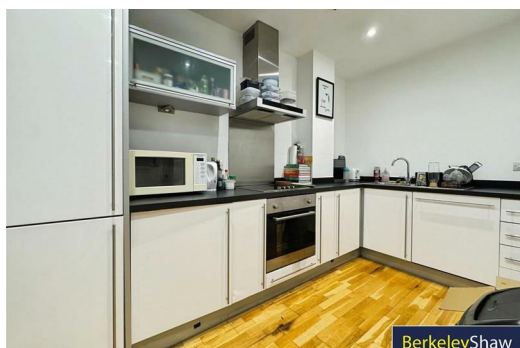
Berkeley Shaw Real Estate are delighted to offer for sale, with no onward chain, this impressive first-floor duplex apartment.

If you're searching for a fantastic city centre base, this stylish apartment could be the ideal home. Perfectly positioned in the heart of Liverpool's Business District, the property places you within easy walking distance of Moorfields and Lime Street stations, Liverpool One, an array of bars, shops and restaurants, and the iconic waterfront. Young professionals, first-time buyers, downsizers and investors will all appreciate the convenience and lifestyle this location provides.

The Unity Building offers superb amenities including a 24-hour concierge, residents-only gym and lift access, ensuring comfort and security at all times.

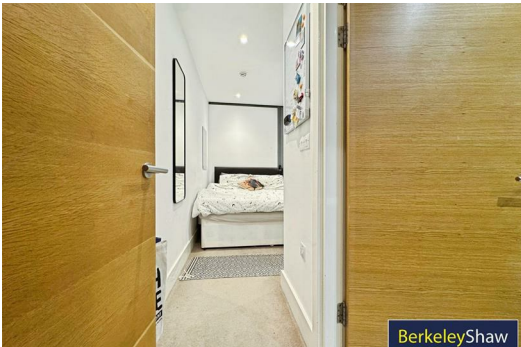
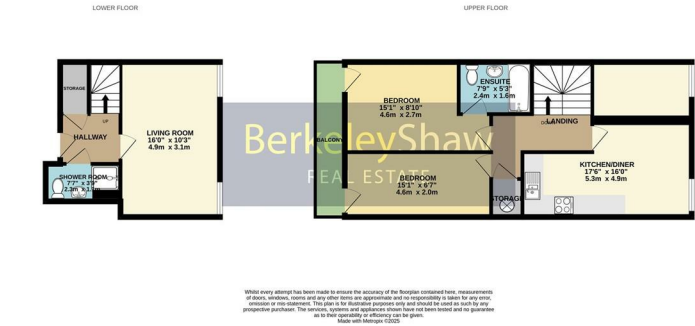
Step inside and the accommodation begins with an entrance hall leading to a modern shower room and a bright Living room which has the potential to be used as a study or casual bedroom.

A staircase leads to the upper level where you will find an impressive master bedroom complete with a contemporary en-suite bathroom & access out to a balcony. This level also features a further double bedroom with balcony access and superb open-plan kitchen diner-an ideal space for entertaining or relaxing after a long day. The kitchen is well appointed with a range of integrated appliances including an electric hob, oven, fridge-freezer, washing machine and dishwasher.



Energy Efficiency Rating		
	Current	Potential
Very energy efficient - lower running costs		
(92 plus) A		
(81-91) B		
(69-80) C		
(55-68) D		
(39-54) E		
(21-38) F		
(1-20) G		
Not energy efficient - higher running costs		
England & Wales EU Directive 2002/91/EC		

Environmental Impact (CO ₂) Rating		
	Current	Potential
Very environmentally friendly - lower CO ₂ emissions		
(92 plus) A		
(81-91) B		
(69-80) C		
(55-68) D		
(39-54) E		
(21-38) F		
(1-20) G		
Not environmentally friendly - higher CO ₂ emissions		
England & Wales EU Directive 2002/91/EC		



Berkeley Shaw Estate Agents Limited.
Company No. 0784754

Berkeley Shaw Real Estate Limited.
Company No. 05206927

